

<b>Major Events:</b>			
	<b>Flower Show</b>	<b>\$0.00</b>	<b>\$0.00</b>
	Income	\$0.00	\$0.00
	Expenses	\$0.00	\$0.00
	<b>Koi Auction</b>	<b>\$2,600.00</b>	<b>\$ 2,976.00</b>
	Income	\$12,000.00	\$13,041.25
	Expenses	\$9,400.00	\$10,065.25
	<b>Pond Tour</b>	<b>\$900.00</b>	<b>\$ (137.92)</b>
	Income	\$2,750.00	\$ 1,045.00
	Expenses	\$1,850.00	\$ 1,182.92
	<b>Koi Show</b>	<b>\$326.00</b>	<b>\$ 653.91</b>
	Income	\$16,346.00	\$13,041.25
	Expenses	\$16,020.00	\$12,387.34
<b>General Notes:</b>			
	<b>Checking Balance as of 12/31/07</b>	<b>\$ 3,823.35</b>	
	<b>Savings Balance as of 12/31/07</b>	<b>\$20,302.59</b>	
	<b>Donation Balance as of 12/31/07</b>	<b>\$ 8,000.00</b>	
	(KHA Scholarship Program)		

(Continued from page 7)

(nitrogen out and oxygen in) at the surface, push floating debris to the skimmers and sweep sinking debris to the bottom drains. The pond water should be circulated through the filters at least once every 2 hours (less is better). Here is an example of a high end koi pond made of concrete floor, block walls and a fiberglass sealant: <http://www.koicymru.co.uk/construct.htm>.

Summary: As one steps from the simpler water feature, to the water garden, to the purpose-built koi pond, the commitment from the owner rises. This commitment is in many forms such as the initial capital expenditure for parts and labor; it is also in operational costs such as water and electricity costs. Another commitment is to gain the knowledge and skills needed by the pond owner to maintain the pond equipment and the resulting water quality so that the inhabitants thrive, not just survive. So if you are planning a new pond or a pond rebuild, consider very carefully which type of pond is best for your site, abilities, and budget. All three types of ponds can be a great asset to your home. But remember, each of these types of ponds are designed for specific purposes and each makes a poor substitute for either of the other pond types. Form does indeed follow function. In future Tabiji steps we will focus on koi and koi ponds. Remember, do your research....and then pick your perfect pond.

**THE POND PROFESSIONAL™**

**Dave A. Jones**  
 (770) 592-2273 office  
 (770) 924-9589 fax  
 (770) 924-1337 home

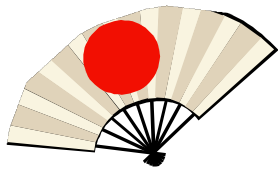
www.ThePondProfessional.com

**Certified Master Pond Contractor**

Water Features      Landscaping      Tree Removal  
 Retaining Walls      General Contracting      Koi & Goldfish

**www.PondDoc.com**

**LOG IN AND LEARN!**



# January 2008 Meeting Minutes

Peggy Fricke

10

Atlanta Koi Club Regular Monthly Meeting  
TEC Automation Inc  
10 Hickory Springs Industrial Drive  
Canton GA 30115  
January 20<sup>h</sup> 2008 Meeting Minutes

Executive members present were: David Boyd, Michael Anderson, Steve Castel, Herve Rijnveld, and Peggy Fricke.

Treasurer Steve Castel gave club members a very interesting tour of his businesses' specialization of robots and their uses in business.

Club President David Boyd called the meeting to order and welcomed new board members Vice President Michael Anderson as and Treasurer Steve Castel.

Steve Castel Treasurer presented a working budget to the board and the board voted to approve the working budget and will bring the final budget to the membership for a vote at the next months meeting.

David Pugh then updated the club on the progress of the 2008 Koi Show. David informed the membership that the club should consider purchasing water for the show as well as the auction due to the lingering drought in Atlanta. It was mentioned that we could use this water purchase as an opportunity to showcase our club and how we are concerned about our local environment.

Steve Castel reported that the Koi Auction will be held again at Coastal Pond Supply (thanks Bill Dowden, you're the best!!!) on April 12<sup>th</sup>. Steve has offered to investigate the costs for having water trucked in for both the Auction as well as the Koi Show. He will then add the costs to the working budget.

## **A Volunteer list is being drafted! Be ready for a call to action!!!!**

A request was made to the board to review and clarify the clubs bylaws. President David Boyd will appoint a committee to review our clubs bylaws and bring any possible changes to the clubs membership for discussion and vote. If you have any questions or concerns please send your responses to [bylaws@atlantaloiclub.org](mailto:bylaws@atlantaloiclub.org).

Michael Anderson then tested the membership on their knowledge of our club and the latest newsletter. "Koi Bucks" were given to the team with the highest score. Koi bucks are monetary credits that can be used for the monthly raffles and at the auction and Koi show.

The club was then treated to good food and an informative video, "Everything you would want to know about Koi".

Thank you Steve for showing us your VERY cool robots!!



**Atlanta  
Koi & Pond**  
Breeder & Dealer of Koi Pond Design & Construction Co.

*Thousands of High-Quality Koi just arrived from Japan  
with Japanese Health Department Certification (KHV  
Free & SVC Free) Plus 30 days local quarantine.*

11:00AM -- 6:00PM  
TUESDAY TO MONDAY **770-454-6799**

3291 Shallowford Rd., Chamblee, GA 30341



**qualityUVlamps.com**

Shop secure online!

**www.qualityUVlamps.com**  
Email: [info@qualityuvlamps.com](mailto:info@qualityuvlamps.com)

# Growing Up In The Mud (Part Two)

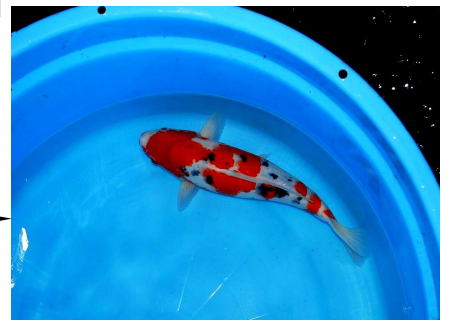
Stephen Castel

Last time I wrote about the journey I have taken over the years, first with the pond construction, filtration and then koi selection and my growth in the hobby. I recently came to the conclusion that if I did not want to foot the bill for a mature koi that could win a grand champion event, then I would need to purchase a younger koi and grow it out in Japan and hope for the best. It's a tough decision but for a first go at it I was pleased with then results. In the last newsletter I published year one and two of the Showa that is still in Japan. The following picture is this koi at 19 months. It measured 18.1".



← This next picture is of the same koi one year later at age 31 months. As one can see, most of the color has come to fruition and a dramatic change in appearance has been revealed. I am still waiting to hear what the length of the koi is at this age. I am slightly concerned that this is a malkoi. It was advertised and guaranteed to be a female. If male, I will not accept it and I am sure that the breeder will offer an exchange for a comparable female. This is just the way the Japanese breeders are. They are very trustworthy and look out for the well being of their customers and wet pets. So for now, I will hope it is a female and am anxious to find out.

I must love the long drawn out process because this year I purchased another koi that is being grown out in Japan. Again, the koi is guaranteed to be female and will stay in Japan several years. This time it's a Sanke. Sanke are one of the most hardest koi to get right as far as the pattern. For the money I spent, I am pleased with the pattern. The body could be better but I decided on this one for future potential. "ONLY TIME WILL TELL" So tune in next year to find out the fate of both koi.



Ohya top 2 year old Sanke from his tategoi group.

**RE/MAX**  
of Buckhead  
**MIHOKO, ABR, CRS, GRI**  
International REALTOR®

4246 Peachtree Road  
Atlanta, Georgia 30319  
Cell: (770) 329-0405, Fax: (404) 237-3631  
Residence: (404) 321-9007  
Office: (404) 237-9011  
E-Mail: mihoko3@bellsouth.net  
Website: Mihoko3.com

Each Office Independently Owned and Operated







It's All About  
The Bead!

**AQUACULTURE**  
SYSTEMS TECHNOLOGIES, L.L.C.  
Bead Filter Specialists

1.800.939.3659 • www.BeadFilters.com





# Continuing Series on Water Quality

Harold Biggio, Certified Master KHA<sup>12</sup>

As koi keepers, we do not need to know the full composition of the water that we use for our ponds. The important message is that the ultimate cocktail we call water is complex and is really a weak solution of several dozen dissolved substances. Some of these are beneficial to fish, some are not. This month we'll look in more depth at the interrelationship between alkalinity, acid/base balance, carbon dioxide and hardness which is called the **carbonate buffering system**. We will also present a protocol for reversing a **pH Crash**.

Many of us get "hung up" on the fact that there are two different types of hardness. Forget all that and just think of Alkalinity (KH) as buffering capacity and GH as hardness.

Let's review: **Alkalinity (KH)** measures dissolved minerals (anions) -- mainly carbonate (CO<sub>3</sub><sup>--</sup>), bicarbonate (HCO<sub>3</sub><sup>-</sup>) and hydroxide (OH<sup>-</sup>). Alkalinity should be around 100 ppm, but koi will tolerate a range of from 0 – 200 ppm and bead filters are most efficient at about 200 ppm. Alkalinity also acts as if there were a big sponge in the middle of your pond sopping up acid generated by normal biological activity. (In chemistry this is known as a buffer and reflects the waters ability to prevent radical changes in pH). As Joe said, and the reason I love it, is that it can also be used as a "red flag" to warn of a possible **pH Crash**. Alkalinity between 40-80 ppm predicts, and alkalinity below 40 confirms a **pH Crash**. (Roark, 2000) You can increase alkalinity with sodium bicarbonate (baking soda) without changing hardness by adding 1 2/3 ounces / 100 gallons of pond water. However, pH, as Joe stated can also rise and baking soda lasts only for a short period of time. In my treatment tanks that period of time is about 1 1/2 weeks.

**Hardness (GH)** measures metals (cations) -- mainly calcium (Ca<sup>++</sup>) and Magnesium (Mg<sup>++</sup>). Hardness of 100 ppm or greater (moderately hard) is ideal. (Saint-Erne, 2002) Partial water changes will reduce both alkalinity and hardness, assuming the replacement water is of a lower value. You can increase both alkalinity and hardness with Calcium carbonate (oyster powder) or calcium hydroxide (slaked lime).

### Acid / base Balance (pH)

Here's a quick note on high pH before we discuss a **pH Crash**. Increasing pH trends that raise pH above 9 pH points carry the risk of a Koi developing **alkalosis**. Generally, the only symptom is an opaque dulling of color because of excess slime coat, if that. The most often occurrence is in concrete ponds that were not properly cured or ponds that have been overplanted. When pH goes off the high end of the scale take the following actions.

pH	Established pond
9.0 – 9.4 pH points	Daily 10 % Water Change until you drop to 8.5 pH points
9.5-9.9 pH points	Daily 25 % water change until you drop to 9.0 pH points, then follow previous rate of change
10 pH points	50 % water change until pH falls below 10 then follow previous rates of change
> 10 pH points	Move any survivors

(Continued on page 13)

**MICROBE-LIFT®**  
**All Natural, Earth-Friendly Pond Products**  
 Preview our new expanded line of pond and koi products  
 Visit our website at:  
[www.microbelift.com](http://www.microbelift.com)  
**Ecological Laboratories INC.**  
 Solving Environmental Problems Naturally Since 1976

**KOL KOI**  
 Pond and Water Garden  
**Blackwater Creek Koi Dealer**  
 Josette Costa  
 Owner  
[www.kolkoi.com](http://www.kolkoi.com)  
[info@kolkoi.com](mailto:info@kolkoi.com)  
 2908 Moon Station Road  
 Kennesaw, Georgia 30144  
 Phone: 678.932.9277  
 Fax: 678.659.9904

(after Meck, 2004)

Two important points: 1) If the source water has a higher pH than the pond you may exacerbate the problem with a water change if you don't treat the source water first. 2) This is a *personal opinion*, but I don't think it's prudent to chemically lower the pH.

Now to the dreaded **pH Crash**....



**When pH drops below 7.0 pH points** the fish start to become stressed. For pH between 6.0 – 7.0, there is time to determine the cause (which is 9 times out of 10 because of exhausted buffering capacity) and to adjust the pH chemically. There are two chemicals that can be used to raise pH. One is more of a short-term solution as it only lasts a week or two – Sodium Bi-carbonate (aka Arm & Hammer Baking Soda). The other, Calcium carbonate, in the form of oyster **powder** is much longer lasting and simple needs replenishment every few months.

**As the pH drops to around 6 pH points** your koi start darting around the tank and are very excitable. If it drops below 6 the koi's own blood pH begins to fall, leading to acidosis and eventual mortality. A reading of 6 confirms that a **pH Crash** has occurred **and emergency action is required**





### Recovery

Since ammonia increases in toxicity with increasing pH, recover needs to be carefully executed when ammonia is detected during a **pH Crash** to avoid killing your fish.

**Do the following steps in order and exactly as written .**

**Step 1:** When ammonia is detected, detoxify the ammonia and increase dissolved oxygen (DO).  
Otherwise go to [Step 2](#).

Test Result	Frequency	water change
pH 6 - 7		Chemically raise your pH by adding unscented Baking Soda @ 1 cup / 1000 gals
If pH under "normal low" by 0.5 or more		<b>You probably have a week or so to avoid a pH Crash.</b> 
KH under 80 but over 40 ppm		
pH under 6.0		<b>You pond has suffered a pH Crash. Take emergency action</b> 
KH under 40		

**Step 2:** Reverse the crash with sequential doses of Baking Soda  
Add unscented baking soda at 1 cup per

Ammonia Present	Pending Crash	Confirmed Crash	Hard Crash
1000 gals		500 gals	

Add the dose to a 5 gal bucket of pond water; dissolve; distribute evenly around pond

Wait

Ammonia Present	Pending Crash	Confirmed Crash	Hard Crash
5 mins		15 – 20 mins	5 mins

Retest

Ammonia Present	Pending Crash	Confirmed Crash	Hard Crash
pH	pH & KH		KH
If below 7.4	If pH < 7.4 or KH < 80 ppm		If KH < 20
Repeat steps 6-8			
<b>However, if ammonia is present, re-dose at 1 cup / 5000 gals</b>			

**Step 3: When ammonia present** complete a 25 % water change, remembering to declorinate the amount of water changed. Otherwise go to [Step 4](#).

**Step 4:** Follow-up over next 2 months

Retest pH & KH in 12 hrs.	Adjust either/both in <b>upward direction only</b> to achieve pH of 7.4 pH points or higher and KH between 80-120 ppm
	<i>pH will often rise to 8.0-8.4 so don't be alarmed</i>
Continue aeration for 24 hours (for 48 hrs if ammonia is present)	
Retest pH & KH daily	Adjust either/both in upward direction as in step 2. However, if ammonia is present resist further adjustments in any direction until no ammonia is detected.
For next week	Cut food ration in half
Retest ammonia daily	Stop feeding for 7 days if ammonia detected.
	Add Amquel + at 0.5 times label directions for entire pond volume
	Change 25 % of water adding Amquel + for the amount of water changed
	Until no ammonia is detected
Watch nitrite for next 2 mos.	Change 25 % of water
	If detected add salt at 0.1 % (1 ¼ cups/100 gal) of entire pond volume
Carefully inspect your fish for signs of opportunistic disease for next two months.	

### News Flash!

Pan Intercorp — Joel Burkhart ... Proudly announces the **FIRST EVER** American owned Grand Champion of the **All Japan Show**.

Congratulations to Andrew Filipowski & "Alexandria" daughter of Rose Queen 2008 Grand Champion Best in Variety Kohaku Dealer: Pan Intercorp Breeder: Sakai of Hiroshima

## Meeting Hosts Needed!!

We have hosts for our club meetings through March. April will be our Auction Event. Starting in May we need hosts for our club meetings. I ask all club members to volunteer to host a club meeting. Take the opportunity to show off your pond and garden. Hosts receive a stipend to cover the costs of the refreshments. We also have two meetings that are designated as socials. One is typically in June and the other in November. OK folks step up and be counted. Don't make me send the koi cops after you! ☺



# Membership

Susan Brown 15

## 2008 DUES ARE DUE

Please join me in welcoming John Ruckart and Dennis Beavers as new members of our club. We are looking forward to meeting you and are very happy to have you as members.

I want to thank all of you that have been so prompt in renewing your membership. AKC has such a great group of members that I would not want to loose a single one. I sincerely hope that any members that have not had a chance to renew as yet will do so soon. I am looking forward to hearing from you. If your information has changed, please fill out the application below and mail it with a check made out to Atlanta Koi Club to the address at the bottom of the page. If no changes just mail the check.

The January meeting at TEC Automation was fascinating, who knew what all robots could do and we have a member who actually builds them. The food was great, the company even better and Michael's program was very impressive. I am looking forward to future programs, way to go Stephen and Michael. Thanks go to all that made the meeting possible. We had 32 members attend and 3 guests. Our membership is now 167.

## MEMBERSHIP APPLICATION ATLANTA KOI CLUB

"Dedicated to Sharing the Joy of Keeping Koi"

[www.AtlantaKoiClub.org](http://www.AtlantaKoiClub.org)



Date: \_\_\_\_\_ Check No.: \_\_\_\_\_ Check Amount: \_\_\_\_\_

Type of Membership: Household: \$50 for 1 Yr. \_\_\_\_\_; \$90 for 2 Yrs. \_\_\_\_\_  
(Check One) Individual: \$30 for 1 Yr. \_\_\_\_\_; \$54 for 2 Yrs. \_\_\_\_\_  
Sponsor: \$150 for 1 Yr. \_\_\_\_\_

Other: KOI USA Magazine Subscription: \$20 for 1 Yr. \_\_\_\_\_  
\*Name Badges: \$5 each. \_\_\_\_\_

Names: \_\_\_\_\_ & \_\_\_\_\_  
          First                      Last                      First                      Last

Address: \_\_\_\_\_

City: \_\_\_\_\_ State: \_\_\_\_\_ Zip: \_\_\_\_\_

Best Phone: \_\_\_\_\_ Best Email: \_\_\_\_\_

AKC is a volunteer organization. We need as much help and support as you can provide, no matter how insignificant. In which of the following areas can you help?

Host Meeting \_\_\_\_, Pond Tour \_\_\_\_, Auction \_\_\_\_, Koi Show \_\_\_\_, Hold Office \_\_\_\_, Flower Show \_\_\_\_

To save money, we provide our newsletter in color via email several days earlier than mailed copies.

Would you like to receive your newsletter via email? Yes or No.

We try to publish a membership roster annually. It is given only to club members and AKCA, the Associated Koi Clubs of America. May we publish your address, phone number and email? Yes or No.

Make checks payable to **Atlanta Koi Club** and submit with application to:  
**Susan G. Brown, 191 Kings Row, Marietta, GA 30067.**

\* Please consider buying **Name Badges**. For only \$5, you will get to know and be known by everyone and also receive a free raffle ticket every time you wear your badge to a Club Meeting.

# February Meeting Sunday, 10 February 2008

16

Officers meet @ 1:00 P.M.

Members meet @ 2:00 P.M.

North Park has an entrance on Cogburn Road (West of Highway 9) and entrance on Bethany Bend Road (West of Highway 9). The February meeting is at the city of Alpharetta's North Park facility Senior Center.

<http://www.alpharetta.ga.us/index.php?p=216>

13450 Cogburn Road

Alpharetta, GA 30004

## Directions from GA 400.

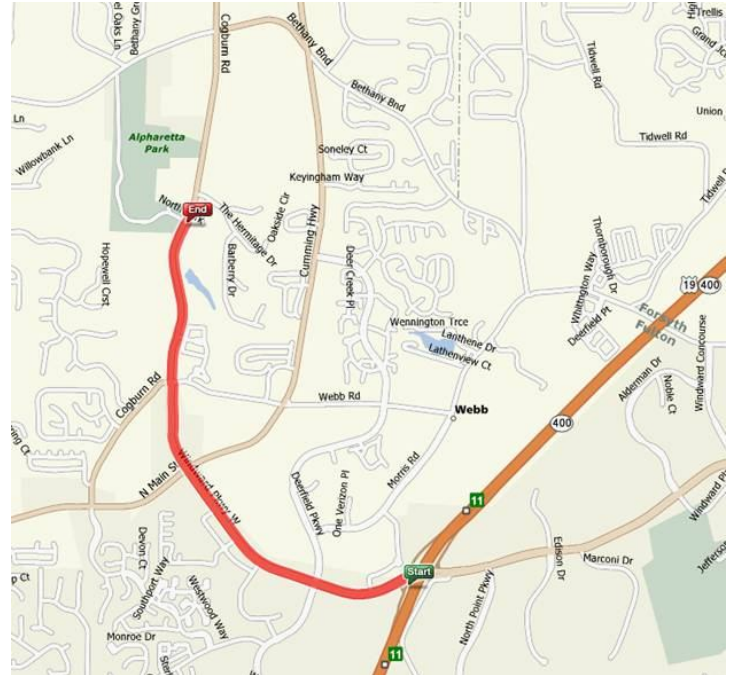
Exit from **GA 400** at Exit 11 **Windward Parkway**  
Travel West on **Windward Parkway** for 1.5 miles.

Continue straight ahead onto **Cogburn Road**  
(road changes from 4 lanes to 2 lanes)

Travel West on **Cogburn Road** for 0.6 miles  
Turn left into **North Park** facility and travel a few hundred feet.

Turn right into parking lot.

Meeting is in the **Senior Citizen Activity Center**



DEDICATED TO SHARING THE JOY OF KEEPING KOI.